



# AMFEC

## AMERICAN FOOD EQUIPMENT COMPANY

[WWW.AMFEC.COM](http://WWW.AMFEC.COM)

534547657568  
675756756756  
7867876889  
7878678789789  
87798797  
7867886976  
78979878978

23423435345464  
5446565464656646  
657656567  
786768  
67866876876  
786768678  
786767

2564	5464	6445	8787	6464	977777	6868	7566
54534	464646	4544646	644	5464	445	443	4544
45465	4432113	4313	43131	43131	4131	4131	644

## INSPECTION & AUTOMATION METAL SEPARATOR - KR

powered by

**p-u-l-s-o-t-r-o-n-i-c**

ANLAGENTECHNIK

# KR - M-PULSE2 / DIGITAL2



and is therefore also suitable for the food industry.

Transmission ports with a maximum diameter of 300 mm allow an extremely high material throughput at maximum sensitivity. This makes the separator particularly suitable for filling plants.

The sensor coil of the metal detector is located in the upper part of the separator. The operating electronics give the impulse to activate the ejection flap when metal is detected by the sensor. The metal is safely sorted out of the product stream via the bad outlet. Depending on the electronics, the function of the ejector can be monitored.

The robust pneumatic-driven mechanics guarantees durability. The KR can be supplied in a wear-resistant version for abrasive products. For places that are difficult to access, there is the option of mounting the control panel at a distance of up to 10 meters. In this way, the device remains easy to operate. A pressure control device can always monitor the correct function.

## SPECIFIC CHARACTERISTICS

- Maintenance-free asynchronous motors
- Type approval (MID)
- maintenance-free mechanics
- with external operating panel 5 m
- very big transmission ports available
- robust, pneumatic-driven ejection mechanics (optional)
- according to the application different electronics available
- design with or without ejection mechanics available
- protection class IP65
- stainless steel housing
- supporting frame can be integrated in existing constructions

## HIGH PRECISION METAL DETECTION FOR FREE FALLING PRODUCTS

The KR separator can be used in almost all areas of industry. The device is made of stainless steel

## TECHNICAL DATA

Type <sup>4</sup>	KR100	KR120	KR150	KR200	KR250	KR250
Mechanical data						
Material-ejection unit	stainless steel					
Material - base frame	stainless steel					
Material - product tube <sup>2</sup>	POM					
Conditions of use						
Storage temperature	-10 – 60°C					
Operating temperature	0 – 50°C					
Protection class	IP 65					
Electrical connection	see datasheet of the control unit					
Pneumatic connection	4-6 bar, filtered, free of water and oil; self-sealing-coupling - fitting NW 7,2					
Throughput <sup>3</sup>	12.000 l/h	16.000 l/h	25.000 l/h	44.000 l/h	69.000 l/h	100.000 l/h
Bulk characteristics	free flowing					

Sensitivity <sup>1</sup>	KR100		KR120		KR150		KR200		KR250		KR250	
Material - test pieces <sup>3</sup>	FE <sup>5</sup>	SS <sup>5</sup>	FE	SS	FE	SS	FE	SS	FE	SS	FE	SS
M-Pulse2	0,4	0,9	0,5	1,0	0,6	1,2	0,8	1,5	1,0	1,8	1,2	2,0
Digital2	0,5	1,2	1,4	1,4	0,9	1,6	1,3	2,0	1,6	2,2	1,8	2,5

### Ordering code:

Electronic                                      Type of separator  
M-Pulse2 / Digital2                      KR 100 – KR 300                      (e.g.: M-Pulse2 KR 200)

- 1) The actual sensitivity depends on various factors. Unfavourable environmental conditions or vibrations can reduce the sensitivity. Conductive test material can also influence the sensitivity. For obliging information please contact our service or sales department. Our service includes product tests in our headquarters. (all data in mm)
- 2) Other materials available.
- 3) Measured with granulate PET - grain dimension 2 - 3mm.
- 4) Bigger dimensions and in-between sizes available on request.
- 5) Fe → Ferrous / SS → Stainless steel

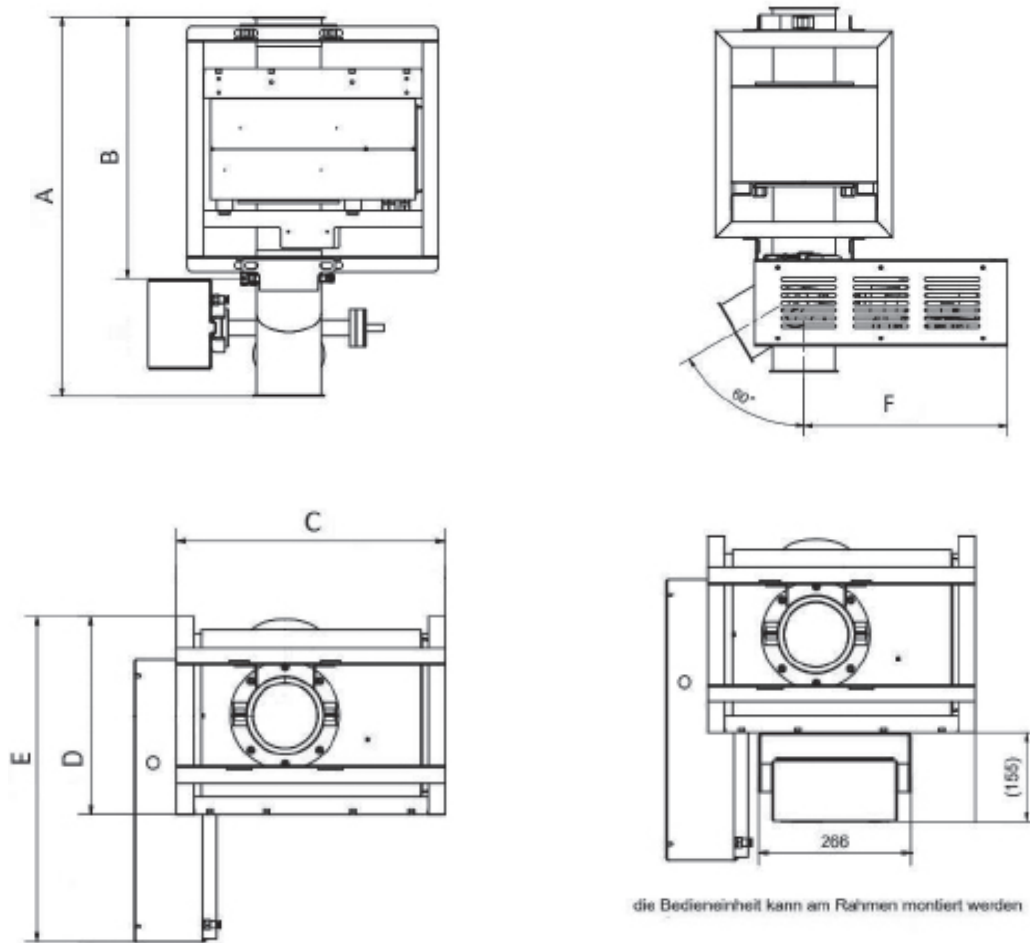
## DELIVERY PROGRAM & ACCESSORIES

All devices of the GF series are serially delivered without ejection mechanics. Adapted mechanics are separately available for all dimensions. For the connecting of the device to a piping optionally a kit consisting of 3 welding socket pieces, 3 snap closing circlips and 3 cooper gaskets are available. Please inform us about the necessary accessories when placing your order.

Designation	Comment
Pneumatic guard	When ordering please specify
Ejector guard (Indicates malfunction of the ejection unit)	When ordering please specify
Cooling by compressed air 60 – 100°C	When ordering please specify
Product pipe wear resistant (glass pipe)	When ordering please specify
Product pipe antistatic/ food	When ordering please specify
External operating panel 10 m	When ordering please specify
Ejection flap EX-S	When ordering please specify
Ejection flap EX-K wear-resistant w. window	When ordering please specify
Connecting kit KR for ejector	When ordering please specify
Connecting kit KR without ejector	When ordering please specify



## DIMENSIONS



Type	KR100	KR120	KR150	KR200	KR250	KR500
Dimensions A	611 mm	708 mm	850 mm	1203 mm	1394 mm	1605 mm
Dimensions B	408 mm	488 mm	551 mm	787 mm	932 mm	1098 mm
Dimensions C	490 mm	470 mm	550 mm	650 mm	810 mm	980 mm
Dimensions D	362 mm	346 mm	402 mm	510 mm	685 mm	800 mm
Dimensions E	565 mm	568 mm	590 mm	686 mm	701 mm	800 mm
Dimensions F	404 mm	395 mm	376 mm	404 mm	358 mm	390 mm

## NOTES

[illegible]

## NOTES

This image shows a single sheet of white paper with horizontal ruling lines. The lines are evenly spaced and run across the width of the page. There are no margins, text, or other markings on the paper.



# CUTTING-EDGE TECHNOLOGY IN X-RAY INSPECTION



---

**Phone:**

208-614-6030

**Mail:**

info@amfec.com

**Website:**

www.amfec.com

**Address:**

4923 East Linden Street  
Caldwell, ID 83605

SEE MORE ON  
OUR WEBSITE

